

ENTRÉ

**HOW-TO GUIDE:
SINGLE SIGN ON**




LT-2009 20245

SINGLE SIGN ON USING PING IDENTITY INTEGRATION

You must have Entré 8.4 or higher to set up Single Sign On (SSO).

- 1 Save the **SSO.cer** certificate to the Entré App Server main directory (**C:\Programs\DMP**). This folder contains **vx.license.properties**, **hibernate.properties**, etc.
- 2 In the PingFederate Admin console, select **PingID Connector**. Then select **Assertion Consumer Service URL** (IPv4).
- 3 Set **Endpoint** to the address or domain name of the machine the Apache Tomcat Server is running on.



Protocol Settings	
Assertion Consumer Service URL	
Endpoint	URL: http://10.4.2.46:8082/dmp/entre-acs
Signature Policy	
Always Sign Assertion	false
Sign Response As Required	true
Encryption Policy	
Status	Inactive

Figure 1: Example of Inserting IP Address, Port Number, and Domain Name

- 4 Select **Save**.
- 5 Start the Entré App Service.

CONFIGURE SSO

- 1 Open the Entré Client and navigate to **Configuration > System Configuration > Single Sign On**.
- 2 In **Assertion attribute mapping**, enter the assertion value that is in the SAML 2.0 response. This is entered as the **Username** when creating the login within Entré as shown in *Desktop Client SSO with Windows Login*.
- 3 In **IdP entity id**, enter the Entré SSO Service Entity ID (URI). This is found in the **PingFederate Identity System > Server > Protocol Settings > Federation Info > SAML 2.0 Entity ID**.
- 4 In **IdP redirect url**, enter the web client Apache Tomcat server address and port number. This is the SSO Application Endpoint.
- 5 In **Assertion consumer service url**, enter the service provider's authentication server address and port number. This is found under **PingFederate SP Connection > Protocol Settings > Assertion Consumer Service URL > Endpoint**.
- 6 In **SP entity id**, enter the service provider's connection ID (URI). The Service Provider Entity ID is the Partners Entity ID found under **Identity Provider > SP Connection > General Info**.

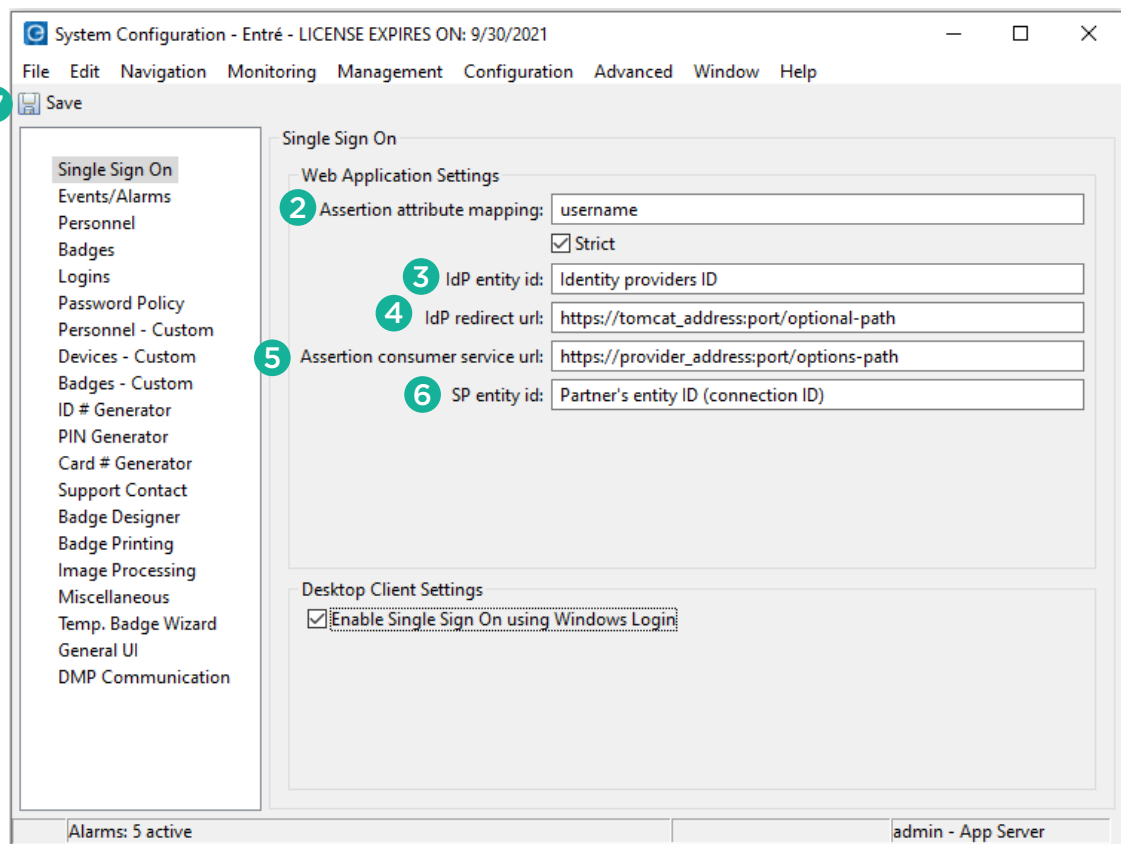


Figure 2: Example of Entering Information for SSO

- 7 Select **Save** and then restart the Entré client.

ADD A NEW OPERATOR

Add a new operator in Entré with any password you want. Entré requires a password to create an operator but authentication will be handled with the identity provider so it won't be used by the web client.

- 1 Start the **Apache Tomcat Service**.
- 2 Enter **http:[tomcat address]:[port]/dmp/entre-ss0** in browser.
- 3 You will be redirected to the **Entré start page**.

DESKTOP CLIENT SSO WITH WINDOWS LOGIN

This feature allows Entré to use the Windows domain user from the machine that is logged in and verifies it against the Entré operator.

- 1 Open the Entré Client and navigate to **Configuration > System Configuration > Single Sign On**.
- 2 Select **Enable Single Sign On using Windows Login**.
- 3 Restart the Entré Client.
- 4 Create a new operator, adding their Windows domain user and an Entré password. This Entré password is separate from their Windows password and is required to create the operator but is only used if the local user can't be authenticated. The **Windows Account** is the local domain and the windows username, separated by a backslash (\).

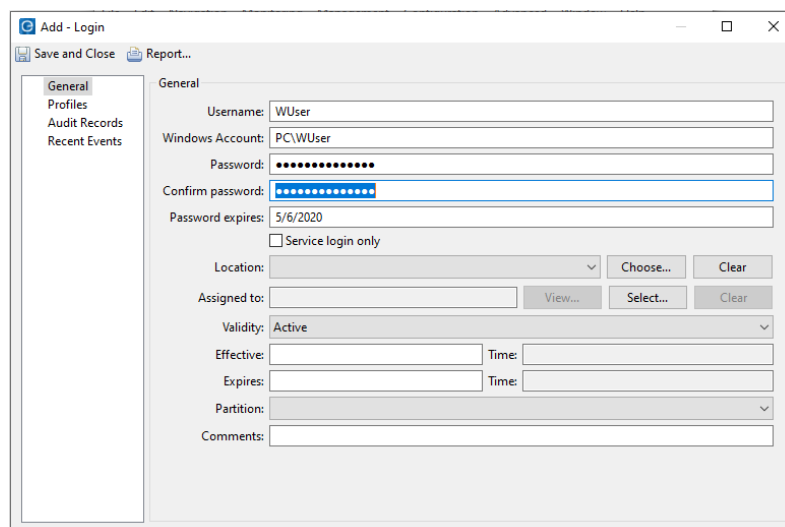


Figure 3: Example for Operator Login



Designed, engineered,
and manufactured in
Springfield, Missouri

INTRUSION • FIRE • ACCESS • NETWORKS

2500 North Partnership Boulevard
Springfield, Missouri 65803-8877

800.641.4282 | dmp.com