



REMOTE *LINK*

HOW-TO GUIDE:
ECP PASSTHRU COMPASS®
SETUP



LT-1941 19452

ECP PASSTHRU OVERVIEW

Starting with Remote Link version 1.93, you can connect a customer's Honeywell VISTA® panel with CellCom, DualCom, or iComSL Series communicators using Honeywell's Compass® software and Remote Link. This feature is called ECP Passthru. Before using the ECP Passthru feature, you must create the VISTA system in Compass.

CREATE A SYSTEM

1 Add the VISTA Panel

Refer to Figure 1 while completing the following steps.

1. Open Compass.
2. In the lower right corner of the **Customers** page, select **Add**. The **Customer Detail** window opens.
3. In **Subscriber Data**, enter a **Receiver** number and **Account** number.
4. In the **Panel Data** section, select the VISTA panel model and revision number.
5. In **Network Device MAC Addr**, enter **FFFFFF**.
6. Press **OK**.

Customer Detail

Subscriber Data

Receiver: 1, Account: 1234, Last Name: , First Name: , Business: , Voice Phone: , Fax: , Address 1: , Address 2: , City: , State: , Zip Code: , Zip Ext: , user_field_1: , user_field_2:

Panel Data

Panel: Vista15P, Revision: Vista15P-9, Class: , Panel Phone Number: , Caller ID: CallerID, EEProm: , Firmware:

IP Communication Device

Network Device MAC Addr: 00D02D, FFFFFFF

Notes

Mass Download Job Name: None

Print, OK, Cancel

Figure 1: Customer Detail

2 Set Up Communication

Refer to Figure 2 while completing the following steps.

1. In **Customers**, double-click the new account. The **Panel Editor** opens.
2. Go to **Tools > Communications**. The **Compass Communication** window opens.
3. Go to **File**, then select **Communication Settings**.
4. In the lower left corner, select **TCPIP Port Settings**.
5. To ensure that Compass uses a TCP/IP connection, select a TCP/IP port.
6. Press **Add**.

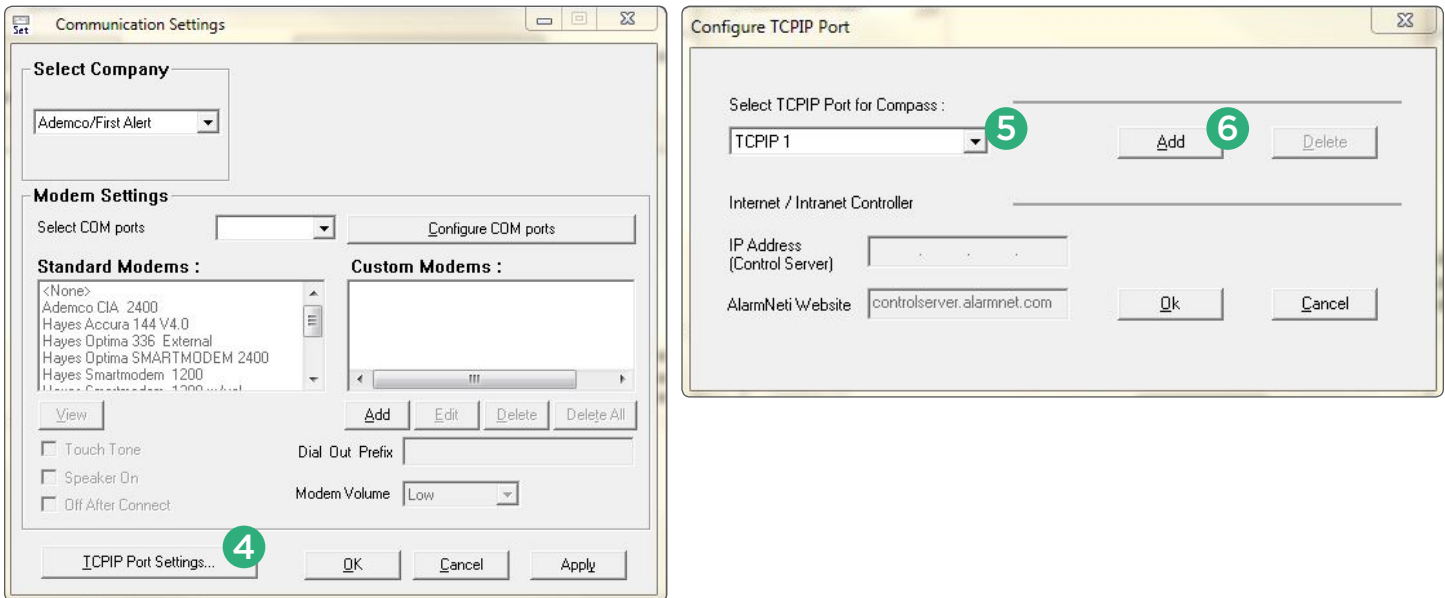


Figure 2: Communication Settings and Configure TCPIP Port

3 Configure TCP/IP Settings

Refer to Figure 3 while completing the following steps.

1. In the lower left corner of the **Compass Communication** window, press **Connect**.
2. A dialog pops up to notify you that communication settings must be configured. Press **OK**.
3. Select **Enable TCP/IP**.
4. In the **TCPIP Port** dropdown, select the appropriate TCP/IP port.
5. Ensure that the **Network Device MAC Addr** is **FFFFFF**.
6. In **Connection Mode**, select **ECP**.
7. Ensure that **AlarmNet-i** is selected.
8. Press **Connect**.

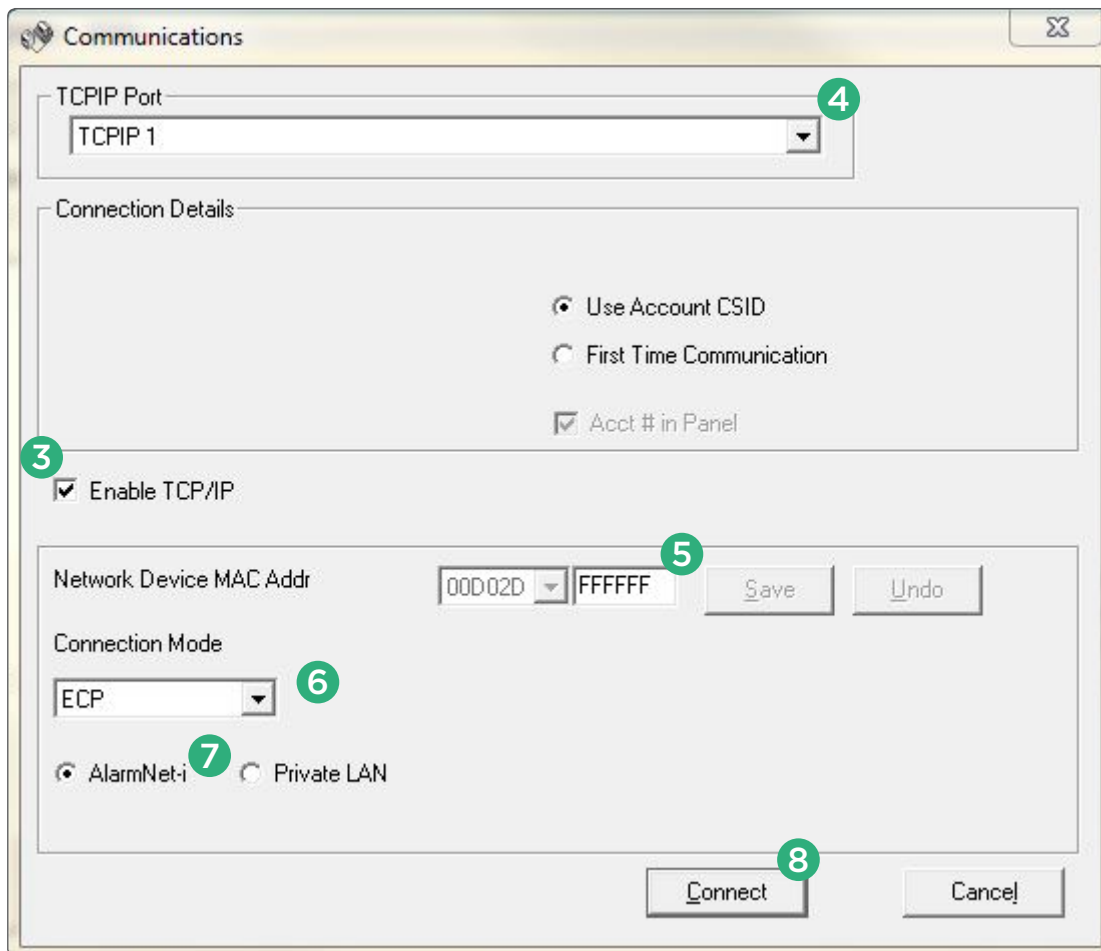


Figure 3: Communications

For more information about ECP Passthru, refer to the [Remote Link User Guide](#) and the programming guides for [CellCom](#), [DualCom](#), or [iComSL](#) Series communicators.



Designed, engineered,
and manufactured in
Springfield, Missouri

INTRUSION • FIRE • ACCESS • NETWORKS

2500 North Partnership Boulevard
Springfield, Missouri 65803-8877

800.641.4282 | dmp.com