

ENTRÉ

**HOW-TO GUIDE:
REMOVING A PANEL**

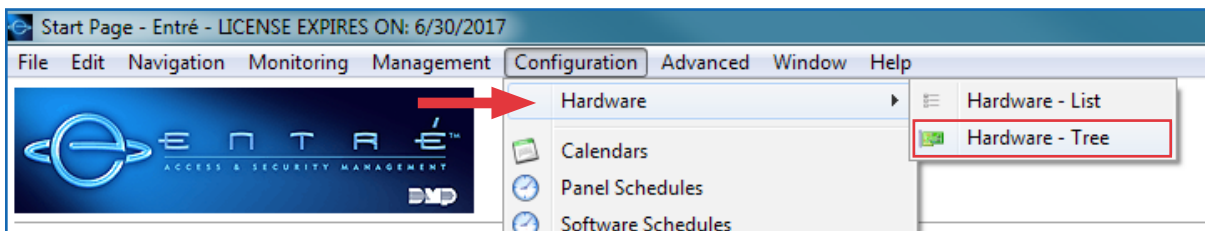


LT-1632 17401

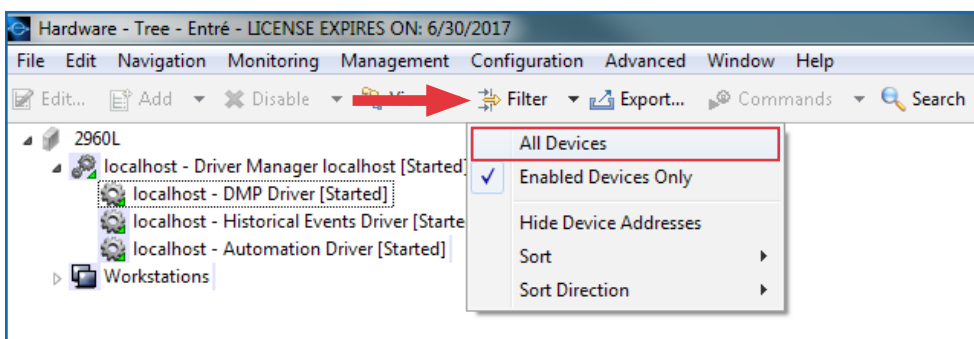
DISABLE THE PANEL

To disable a panel in the hardware tree, you must disable all of the programming associated with the panel in Entré. This breaks all of the panel's ties to other devices and allows it to be cleanly disabled in the Entré database.

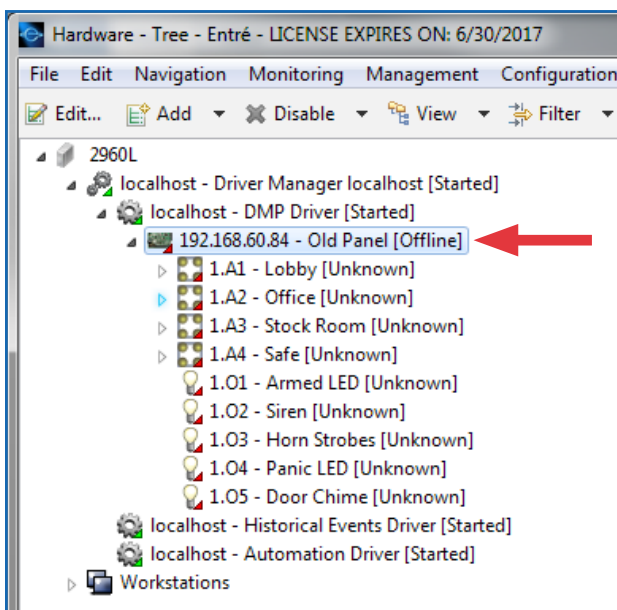
- 1 Open the **Configuration** menu, hover over **Hardware**, and select **Hardware - Tree**.



- 2 Click **Filter** and select **All Devices** from the menu.

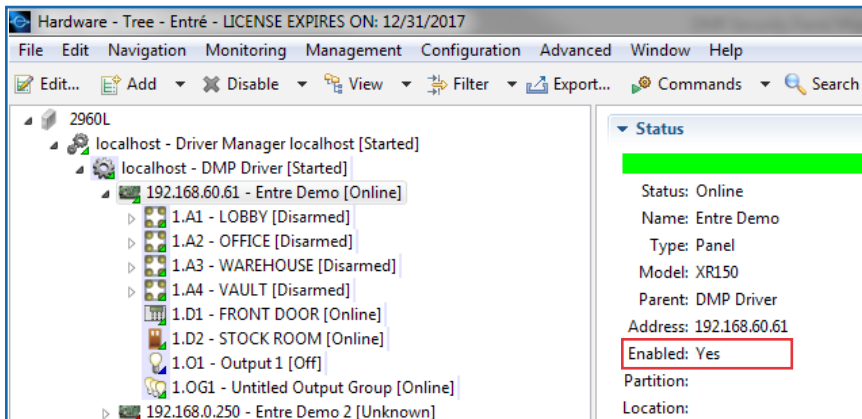


- 3 Locate the panel you are disabling.

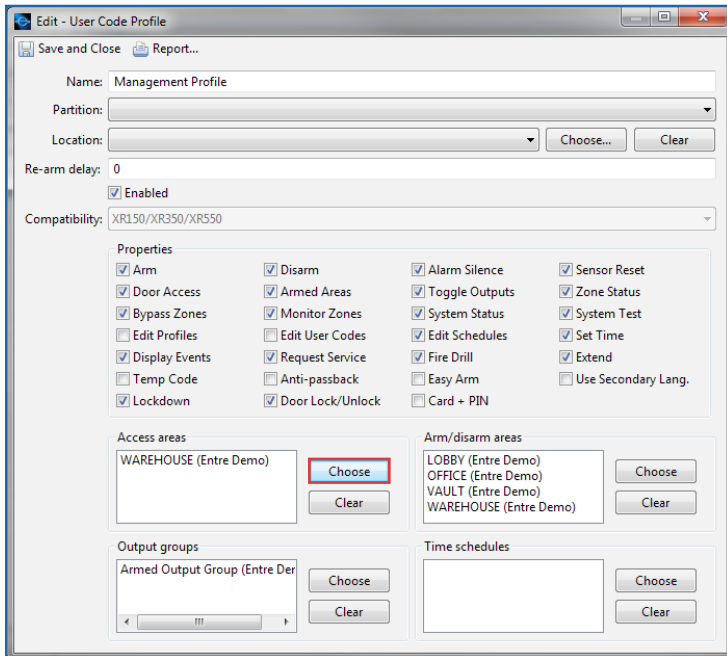


4

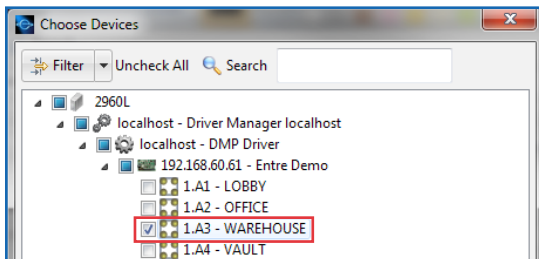
All area and output group assignments must be removed from the user code profiles. Follow the steps below to delete them before continuing to step 5.



- Open the **Management** menu, then select **User Code Profiles**.
- Locate the profile that has the areas and/or output groups assigned.
- Click **Choose** to the right of the **Access areas** field.



- Uncheck any areas that are under the panel that is being disabled.

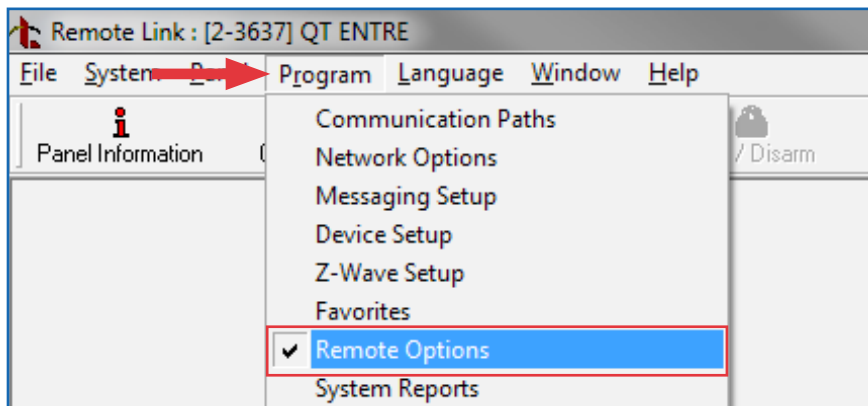


- Click **OK** to confirm.
- Repeat this process for the **Arm/disarm areas** and **Output groups** sections of the profile, if needed.
- Click **Save and Close**.

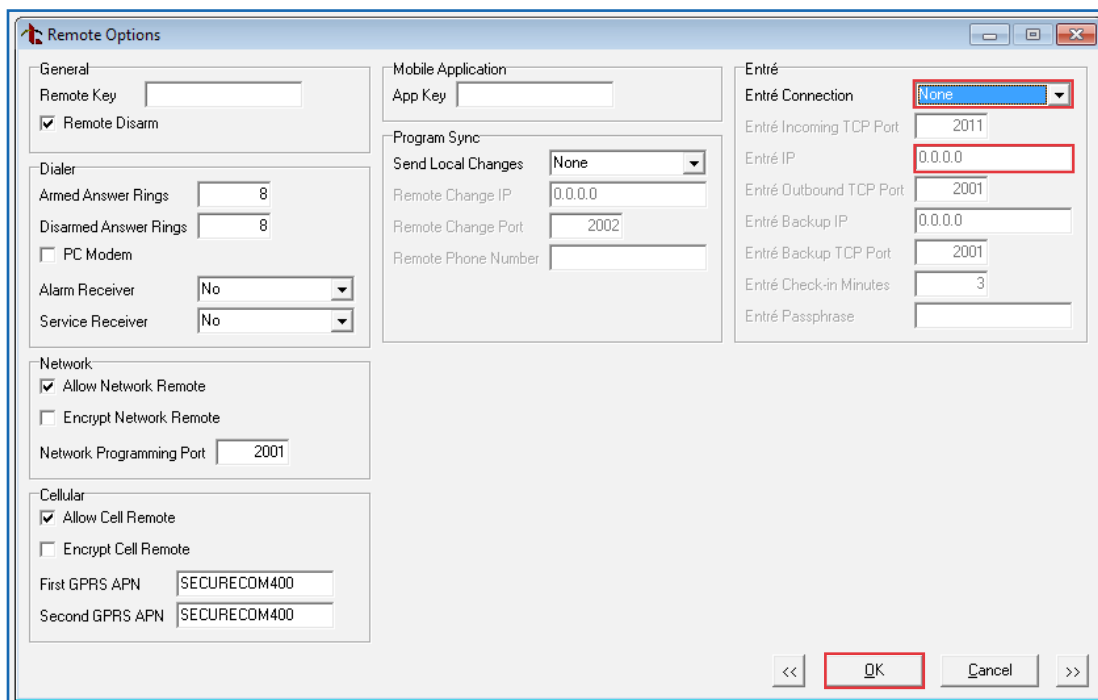
- 5 If the panel is currently online in Entré, physically remove the panel's local network connection. You can also use Remote Link™ to remove the panel's connection. If the panel is currently offline, right-click the panel, and then select **Disable**.

Remove the Connection with Remote Link

- a. Once connected, open the **Program** menu, then select **Remote Options**.

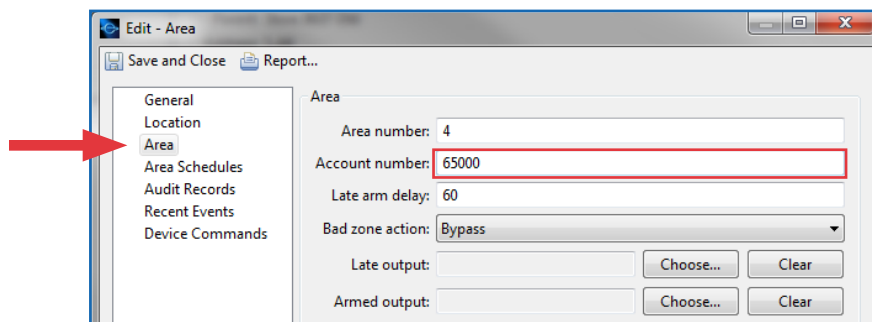


- b. Set the **Entré IP** to "0.0.0.0" and change the **Entré Connection** drop-down selection to **None**.
c. Click **OK** to confirm.

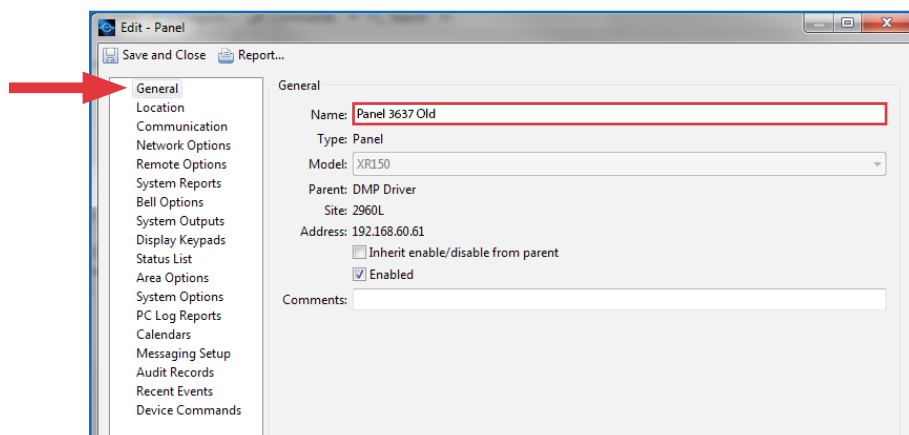


- d. Disconnect from the panel in Remote Link.
e. If the panel shows as online in Entré, right-click the panel, select **Panel Control**, and then select **Restart**.

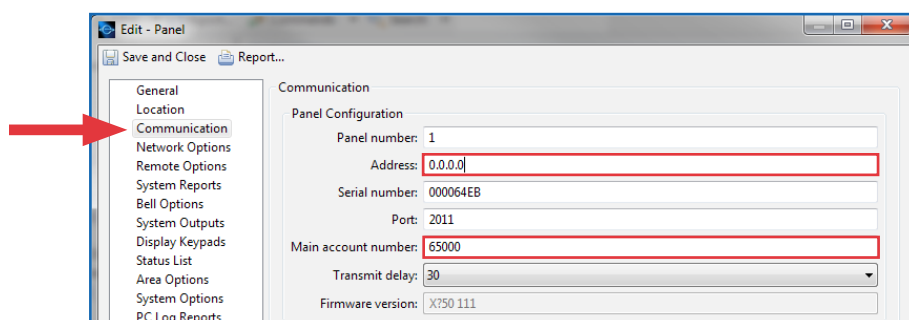
- 6 Select each area and change the account number. Then disable all areas.
 - a. Right-click on an area and select **Edit**.
 - b. Select **Area** and change the account number. Begin at 65000 and go down a number for each new panel.
 - c. Click **Save and Close**.
 - d. Right-click the area and click **Disable**.



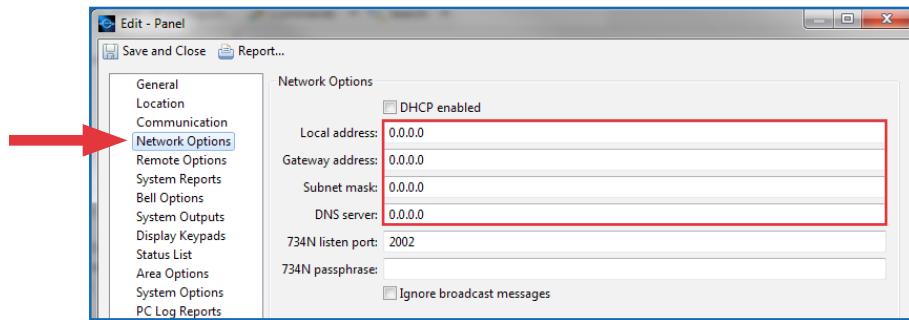
- 7 Change the panel name, IP address, and account number.
 - a. Right-click the panel and select **Edit**.
 - b. In the **General** section, change the **Name** to “Panel #### Old” (where #### is the panel number).



- c. Select **Communication** and change the **Address** to “0.0.0.0”. Change the **Main account number** to match the account number that was assigned to areas in step 6.

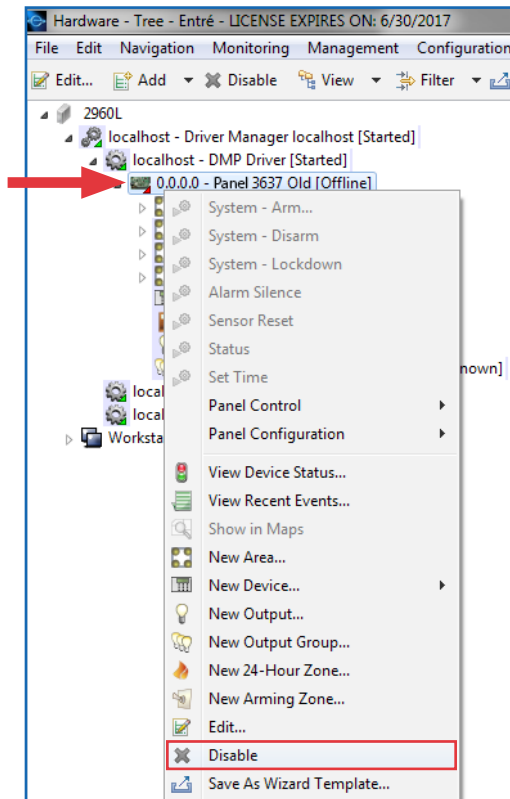


d. Select **Network Options** and change all IP addresses to “0.0.0.0”.



e. Click **Save and Close**.

8 Right-click the panel and select **Disable**, then click **Yes** to confirm.



*Designed, engineered,
and manufactured in
Springfield, Missouri*

INTRUSION • FIRE • ACCESS • NETWORKS

2500 North Partnership Boulevard
Springfield, Missouri 65803-8877

800-641-4282 | dmp.com