

WIRE-IN TRANSFORMERS

INSTALLATION SHEET

DESCRIPTION

The Model 323 and 324P are wire-in transformers on a mounting plate to be installed in any 350 or 350A enclosure. These transformers are designed to provide power for an XR150 or XR550 Series panel.

The 323 is a 16 VAC 56 VA wire-in transformer that provides up to 2 Amps of power. The 324P is a 16 VAC 100 VA wire-in transformer that provides up to 3 Amps of power.

MOUNTING THE TRANSFORMER

Use the following steps to mount the 323/324P Transformer:

1. Slide the mounting plate into the top position of the mounting bracket at the top of the 350 or 350A enclosure.
2. Using the supplied screws, secure the lower edges of the mounting plate into the permanent standoffs in the 350 or 350A enclosure.

PANEL 3-PIN HEADER

For the 323, on the XR150/XR550 panel, place the jumper on the left two pins labeled 50 VA for a Maximum 2 Amp (Bell+Aux+Smoke=2 Amp) when using the Model 323 56 VA transformer (default setting).

For the 324P, on the XR150/XR550 panel, place the jumper on the right two pins labeled 75 VA for a Maximum 3 Amp (Bell+Aux+Smoke=3 Amp) when using the Model 324P 100 VA wire-in transformer.

Note: For UL Commercial Fire installations, refer to System Configurations in the XR150/XR550 Compliance Listing Guide (LT-1330), for more information.

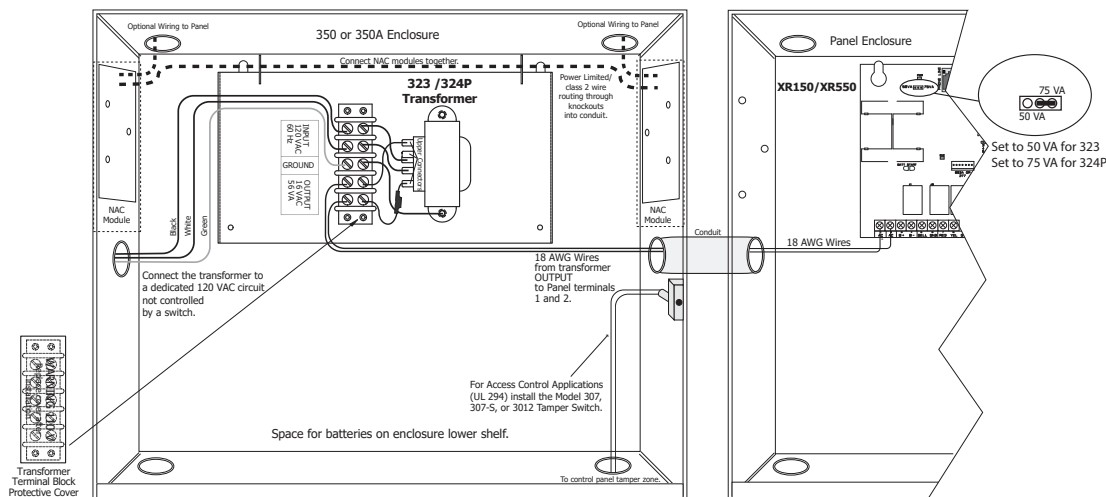
WIRING THE 323/324P

Use the following steps to connect the transformer to the panel:

1. Carefully remove the protective cover located over the terminal block.
2. Cut two lengths of 18 AWG wire to run from the transformer through the conduit and into the panel enclosure.
3. In the transformer enclosure, connect one 18 AWG wire to one of the OUTPUT terminals. Connect the other 18 AWG wire to the second OUTPUT terminal.
4. In the panel enclosure, connect the other ends of the 18 AWG wires to the panel terminals 1 and 2.

Connect the transformer to a 120 VAC dedicated circuit not controlled by a switch:

1. Connect the black, white, and green (GROUND) AC wires to the transformer INPUT and GROUND terminals.
2. Snap the protective cover onto the plastic standoffs to cover the terminal block.



UNDERWRITERS LABORATORY (UL) LISTED

ANSI/UL 294 Access Control System Units

Level I: Destructive Attack, Line Security, Standby Power

Level IV: Endurance

LT-0841.1.03 © 2019 Digital Monitoring Products, Inc.

19082

