

Link Server

Description

Link Server allows multiple Remote Link computers to access a Remote Link database located on a network server. Link Server provides a server database and is designed for applications where more than three computers must perform extensive database access operations at the same time such as uploading and downloading information from panels. Link Server can be used to setup a new server database or configure an existing database for a server application.

Install Remote Link software on each computer accessing the network server database. Configure Remote Link to identify the network server location for database access. See Remote Link Configuration.

Note: Standard Remote Link operation supports multiple database access for up to three computers without Link Server as long as only one computer at a time performs extensive database access operations such as uploading or downloading information from a panel.

What is Included

Link Server software CD containing:

Setup Link Server - Use to setup the Link Server software on the network server.

Link Server Administration - Server administration utility.

It is recommended the administration utility not be used unless directed by DMP Technical Services.

Repair Database - Use to repair a corrupt database. See the Remote Link User's Guide (LT-0565).

Restore Database - Use to restore a database from a back up. See the Remote Link User's Guide (LT-0565).

Requirements

- Remote Link™ version 1.21 or higher installed on all computers accessing the network server database
- A minimum of 30 MB free on the server
- Windows NT4, 2000, or XP operating system on the server
- The IP address and port number of the server
- The Remote Link database installed on the server
- The directory location of the database on the server

Database Installation

Use the following steps to install an existing Remote Link database on the server:

1. Copy the entire directory folder (i.e. Db) containing the Remote Link database and paste onto the network server.
2. Write down the location where the database is located on the server (i.e. C:\Link Server\DB).

Link Server Software Installation

Note: This process installs the Link Server software as a Windows service that runs in the background on the server hard drive. If installing with a firewall, the firewall settings may need to be modified to allow access to ports 12005 and 12006.

Use the following steps to install the Server software:

1. Insert the Link Server CD into the CD-ROM drive. The Link Server installation should begin automatically. If the installation program does not start, go to the D:\ drive (or the drive letter assigned to your CD drive) in Windows Explorer and double-click on **setup.exe**. Then, follow the instructions on your screen.
2. When prompted, enter the location to install the software or select OK to accept the default location: C:\Program Files\DMP\Link Server.
3. When the installation completes, select the Setup Link Server icon from the Link Server start menu.

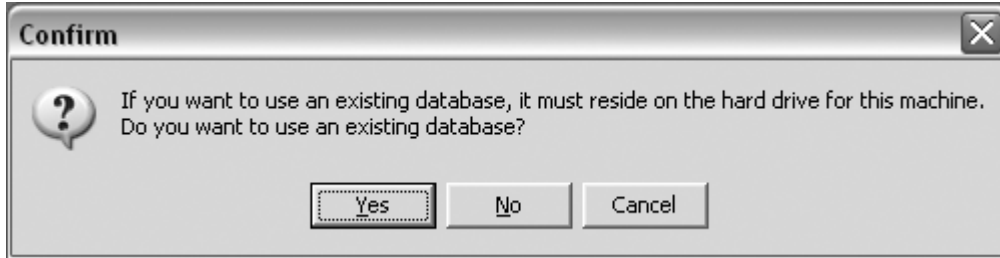


Database Directory

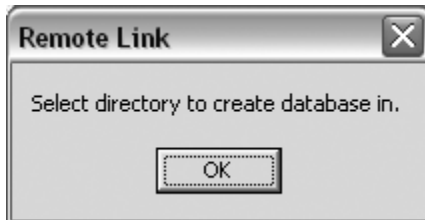
Use the following steps for Link Server software to setup the database directory folder on the server hard drive:

1. Select Setup Link Server from the Link Server start menu to start the setup utility.
2. At the confirmation window, click YES to use the Remote Link database located on the network server. Click NO to create a new Link Server database.

Note: If using an existing Remote Link database and it is NOT located on the network server hard drive, select CANCEL and follow the **Database Installation** steps on the previous page.

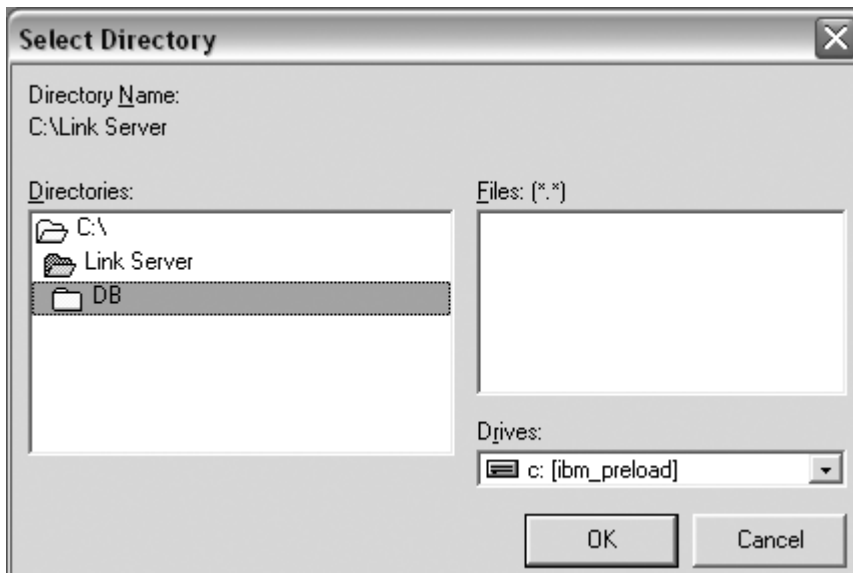


3. Click OK to select the database directory location.



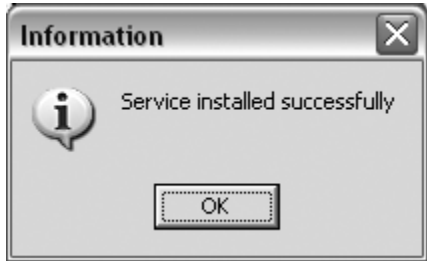
4. Choose the directory folder to create the new Link Server database or the directory folder that contains the existing Remote Link database and select OK. For example, C:\Link Server\DB. Use the Drives: drop down menu to select the root directory.

Note: Link Server automatically configures the server port number (default 12005 and 12006) to recognize the location of the database.

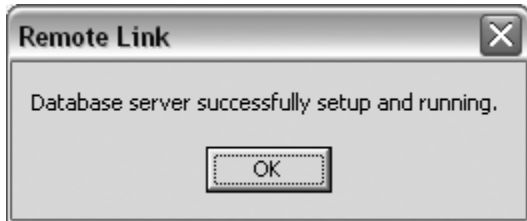


Completing the Installation

The first time the setup utility is run on the server, this message displays to indicate the server software installed successfully. Click OK. This message does not display again.



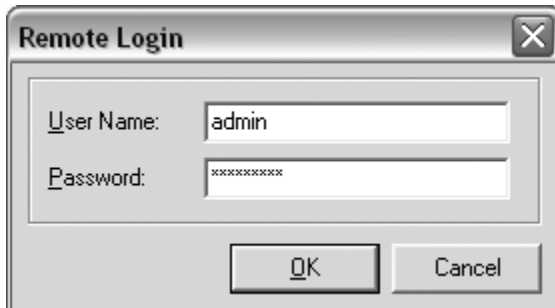
After completing the Link Server software setup and verifying the database location, a confirmation screen displays to indicate successful server and database setup.



Admin Login

When any Link Server start menu icon is selected, the user name and password login screen displays to allow access to the Link Server database. The default user name is **admin** and the case sensitive default password is **LinkAdmin**.

Note: If the database location needs to be updated or if the server is restarted, select the Setup Link Server icon from the Link Server start menu.



Server Operation

Link Server installs as a Windows service that operates in the background on the server hard drive. An icon is visible in the system tray indicating the Link Server DBISAM Database Service is operating properly.



Remote Link Configuration

Install Remote Link version 1.21 or higher on each computer accessing the Link Server database.

Database Tab

Go to **Remote Link Configuration>Database** tab in Remote Link. The settings under the **Database** tab allow you to change the location where Remote Link accesses the Link Server database.

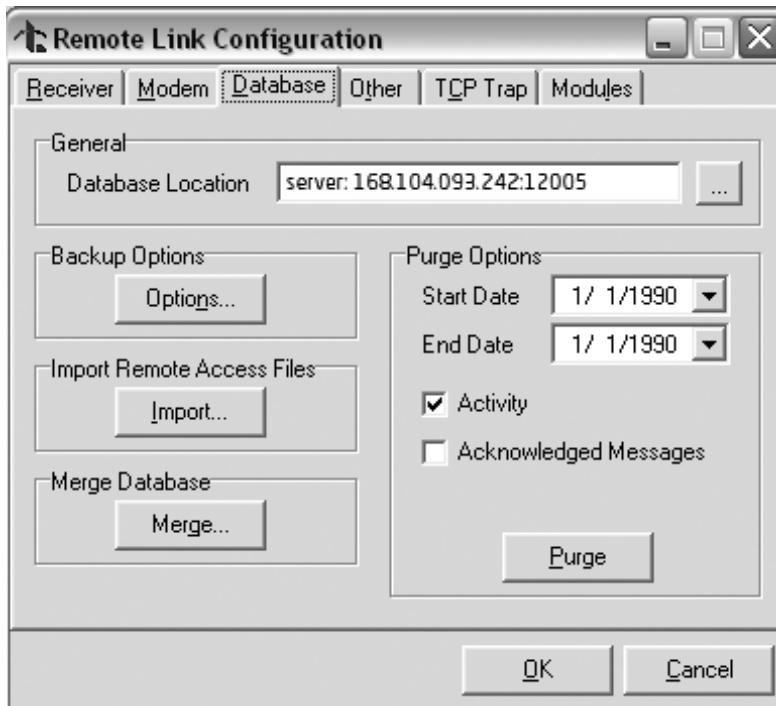
Database Location

Enter the network server IP address and port number to the Link Server database location. The default port number is 12005. Check with your Link Server administrator for the correct IP address and port number and enter the information using the following format:

server:xxx.xxx.xxx.xxx:ppppp

x = IP Address

p = Port Number



800-641-4282

www.dmp.com

Designed, Engineered and
Assembled in U.S.A.

INTRUSION • FIRE • ACCESS • NETWORKS

2500 North Partnership Boulevard

Springfield, Missouri 65803-8877