

1301 Series Proximity Readers

Description

Greatly reduce the time needed to add multiple user codes with the 1301 Series Proximity Readers. Using Remote Link, System Link or Entré, simply scan the user proximity device instead of manually typing the user code.

The reader comes with configurable flash memory to handle all formats and user-selectable features.

The reader draws power from the computer USB port, no additional power is necessary.

1301P Proximity Reader: Used in conjunction with DMP proximity credentials

1301I Proximity Reader: Used in conjunction with all I-Class Series proximity credentials.

Installing the Reader

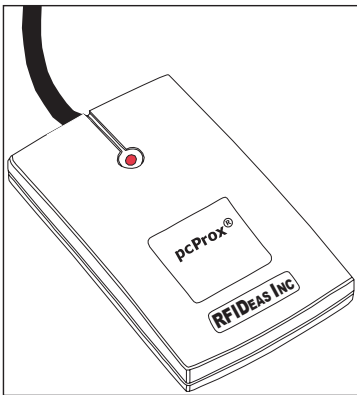


Figure 1: 1301 Series Prox Reader

Connect the reader to a standard USB port on a computer. Windows™ automatically recognizes the new hardware and initiates the driver and hardware installation processes. Follow the Windows instructions to load the driver. The Red LED on the reader turns on when the unit is installed and receives power.

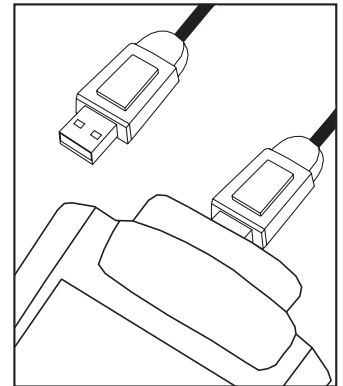


Figure 2: USB Connection

Configuring Remote/System Link

After properly connecting the reader to a USB port on the computer and installing the reader driver, open **System > Configure > Remote/System Link**. Select the **Other Tab**.

Enter the following information to setup the software program to work with the reader.

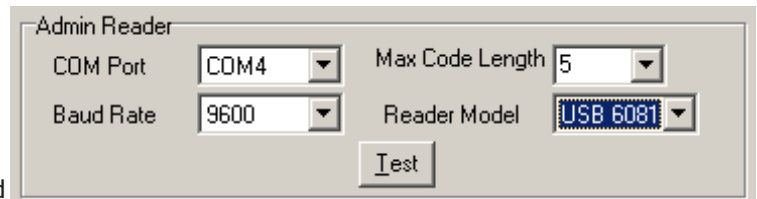
COM Port: Select the Port to which the reader is connected. The COM port number can be seen using the Windows XP Device Manager.

Baud Rate: This is the speed at which Remote Link or System Link communicates with the reader. The reader operates at the default Baud Rate of 9600.

Max Code Length: Select 5 or 6 character length

Reader Model: Select USB 6081 as the reader model.

Test: Click the Test button to test the COM Port and Baud Rate.



Configuring Entré

After properly connecting the reader to a USB port on the computer and installing the reader driver, open **Edit > Preferences**. Select the **Card Reader Tab** on the left side of the window. Click on the **Add** button along the top of the window to add the card reader to Entré.

Enter the following information to setup the software program to work with the reader.

Enabled: Select to enable the card reader.

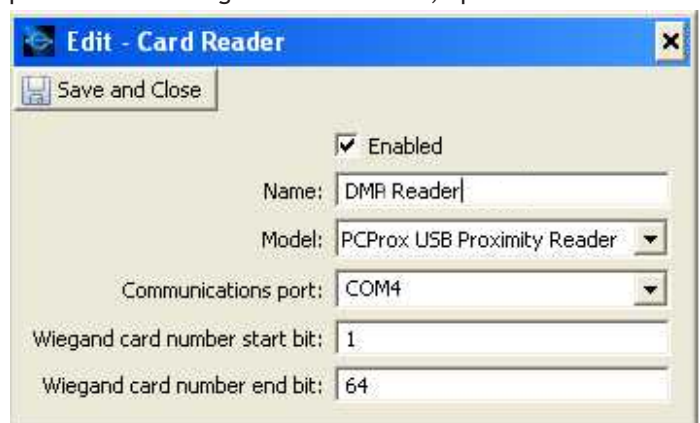
Name: Type in a name for the card reader.

Model: For the installation of the reader, select PCProx USB Proximity Reader from the drop-down menu.

COM Port: Select the Port to which the reader is connected. The COM port number can be seen using the Windows XP Device Manager.

Wiegand card number start bit: Leave with defaulted values.

Wiegand card number end bit: Leave with defaulted values.



Using the Reader with Remote Link

Open **File > Panel Information** to select the panel for connection from the list in the Panel Information window. Click **OK** to open that panel.

Open **Program > User Codes**. To add a new user, click the **New** button and enter all of the user information.

Click the **Scan Card** button at any time while entering user information to scan in the user code number from a proximity device. After clicking the **Scan Card** button, present the proximity device to the reader. When the proximity device is properly scanned, the LED on the reader flashes Green. The proximity device user code is then automatically assigned to the user.

Refer to the Link help file or the Remote Link User's Guide (LT-0565) for information about adding users.

Using the Reader with System Link

Open **Panel > Connect** and click the **Connect** button to connect to the panel.

Once connected to the panel, open **Program > User Codes**. To add a new user, click the **New** button and enter all of the user information.

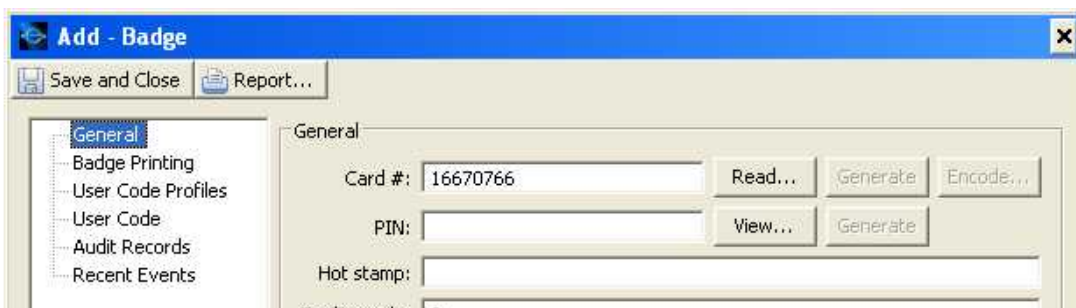
Click the **Scan Card** button at any time while entering user information to scan in the user code number from a proximity device. After clicking the **Scan Card** button, present the proximity device to the reader. When the proximity device is properly scanned, the LED on the reader flashes Green. The proximity device user code is then automatically assigned to the user.

Refer to the Link help file or the System Link User's Guide (LT-0570) for information about adding users.

Using the Reader with Entré

Open **Management > Badges** from the main menu to open up a Badge window.

Click on the **Add** button to add a card to the system.



To scan the card #:

Select the **General** tab from the left side of the window.

Click on the **Read** button next to the Card # window.

The system will prompt you to scan your proximity card. Once scanned, the card number displays in the Card # field.

To generate a User Code from the card:


Select the **User Code** tab from the left side of the window.

Click on the **Generate** button next to the User code window.

From the drop down menu, select **Generate from card number**.

The User Code displays in the User Code field.

Click on the **Save and Close** button near the top of the window.

<p>Specifications</p> <p>Power Supply PC USB Connection Maximum Read Range 1" to 3" Dimensions 3.375" L x 2" H x 0.6" D</p> <p>Compatibility</p> <p>Remote Link System Link Entré Lite Entré Business Entré Enterprise Entré Central Station</p>	<p>Ordering Information</p> <p>1301P Proximity Reader for DMP proximity credentials 1301I Proximity Reader for I-Class Series proximity credentials</p> <p>Listings and Approvals</p> <p>FCC Approved</p>
	<p>800-641-4282</p> <p>www.dmp.com</p> <p>Made in the USA</p>
<p>INTRUSION • FIRE • ACCESS • NETWORKS</p> <p>2500 North Partnership Boulevard</p> <p>Springfield, Missouri 65803-8877</p>	

Description

Installing the Reader

Configuring Remote/System Link

Configuring Entré

Specifications

Compatibility

Listings and Approvals

Using the Reader with Remote Link

Using the Reader with System Link

Using the Reader with Entré